

What Will Happen if a Flood Occurs?

Preparation in Normal Times

1 This is what is happening outside your home...

Going to an evacuation shelter after an earthquake
Thinking that you will be OK if you evacuate....

! Evacuation shelters may be flooded.

If you think you will be fine because you live in an apartment or a house more than two storeys high.....

! You may have to live without water, gas, electricity, and a working toilet for up to a week.

If you think someone will come to rescue you soon...

! Many people cannot be rescued during a flood.

2 This is what is happening inside your home...

Toilets cannot be flushed, so human waste becomes garbage.

Food in the refrigerator spoils.

The air conditioner does not work even though it is hot.

Even if you are thirsty, there's no tap water.

Clothes cannot be washed.

The TV does not work. Mobile phones do not get a signal.

Trash builds up.

Heat stroke

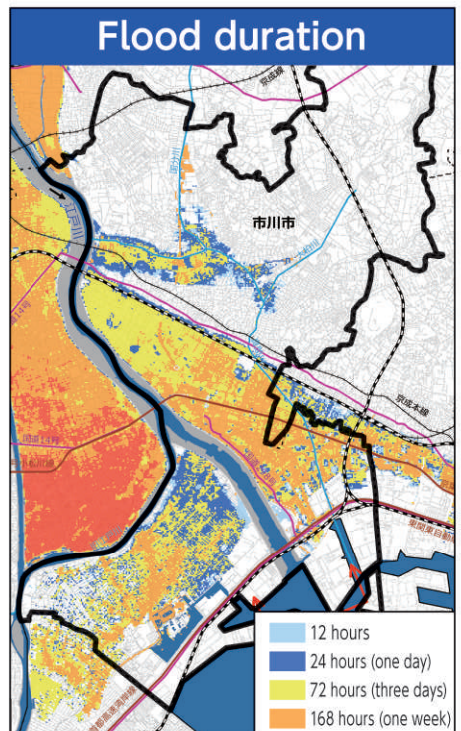
You get an upset stomach.

According to national government predictions, some areas may be flooded for up to a week in the event of a major flood. In such a case, it is very important for each household to stockpile food, drinking water, and prepare an emergency toilet.

The Ministry of Land, Infrastructure, Transport and Tourism's "Flooding Navigation" provides detailed information on where, when, and how much flooding will occur after the banks of the Edogawa River break.

MLIT "Flooding Navigation" Search

<https://suiboumap.gsi.go.jp/>



Reference: Flood duration in the event the Edogawa River collapses due to the maximum expected rainfall: "Map of Estimated Areas of Flood Inundation" created by the Edogawa River Office of the Ministry of Land, Infrastructure, Transport and Tourism.

What Should I Do if a Typhoon Hits?

Preparations before heavy rain

1 Check your stockpiles.

When the supply of electricity, gas, and water stops, it may take a long time to restore them. When the elevators stop working in high-rise apartments, people living on the higher floors will have a very hard time carrying heavy items, such as drinking water, so we recommend that you stock up.

**At least three days worth
Seven days worth if possible**

2 Check the path of the typhoon.

The damage from a typhoon is significantly influenced by its size and path. Typhoons have strong winds blowing counterclockwise as seen from above, so the wind is stronger in the right half of a circle in the direction that the typhoon is traveling. We must thoroughly prepare for strong winds and storm surges.



3 Check the danger time frame.

The Japan Meteorological Agency releases the danger level of future warnings and advisories for each municipality by time frame.



Types of warnings and advisories being issued	Expected Warnings and Advisories (Warning level, Advisory level)						
	3-6	6-9	9-12	12-15	15-18	18-21	21-24
Flood							
Flood damage							

Weather warnings/advisories: Ichikawa Search

https://www.jma.go.jp/jp/warn/f_1220300.html

4 Three "fill ups" you will be glad you did!

1 Mobile phone batteries

A mobile phone is critical for getting information. Be sure to charge your battery so that you can use it in case of a power outage.

2 Gasoline

You can get electric power from your car during a power outage.
※ Evacuating in your car during a flood is dangerous as you may be locked inside if it is submerged.

3 Bath water

You can use the water in your bath tub as essential water for living if the water supply is cut off.

5 Prepare for strong winds

- Secure items that could be blown away so as not to harm people around you.
- 1 Stockpile tarpaulins in case the roof on your house is damaged.
 - 2 Keep flowerpots and other plants inside your home to prevent them from being blown away.
 - 3 For windows that do not have shutters, close the curtains and/or apply shatterproof film.
 - 4 Take down clotheslines to prevent them from being blown away.

