

# About Ichikawa

## Information

Ichikawa City was founded in **1934**

Area Approximately **56 km<sup>2</sup>**

Population Approximately **500,000**  
(as of April, 2023)

City flower **Rose**

City Tree **Black pine**

### Access

About **1 hour**  
by train or car from Tokyo & Narita International Airport

About **30 minutes**  
by train from Tokyo Station



## Sister Cities, Friendship & Partner Cities



Gardena, California, USA  
Sister City since 1962



Leshan, Sichuan, China  
Friendship City since 1981



Medan, North Sumatra, Indonesia  
Sister City since 1989



Rosenheim, Bavaria, Germany  
Partner City since 2004  
(Council approved)



Issy-les-Moulineaux, Île-de-France, France  
Partner City since 2012  
(Council approved)



Caserta, Campania, Italy  
Partner City since 2019



**Ichikawa City**  
1-1-1 Yawata, Ichikawa City,  
Chiba, 272-8501, JAPAN

YouTube



X



Facebook



Instagram



# ICHIKAWA

## ICHIKAWA CITY

is in northwestern Chiba Prefecture, facing Tokyo across the Edogawa River. It is located approximately 20km from the center of Tokyo and has been developing as an educational and residential city. The city has concentration of the wide-area traffic network that connects the center of Tokyo with many areas of Chiba Prefecture. Major rail routes and road pass through the city.



Play / Enjoy



**Lifelong Learning Center (Media Park Ichikawa)**

This facility comprises the Central Library, Literature Museum, Education Center, etc., and offers learning support for a wide range of people from small children to the elderly.

**Archeological Museum**  
Earthenware and other artifacts excavated from archaeological sites in the city are on display. The museum introduces the primitive to ancient times of Ichikawa City, which had a rich and livable environment and was an important transportation hub.



**History Museum**

The History Museum introduces the history and culture of Ichikawa since the late 12th century. With its seashore and plateau, Ichikawa developed as an important transportation center with both waterways and overland routes.



**Omachi Recreation Zone**

The Zoological and Botanical Gardens, the core of the Omachi Recreation Zone, is home to about 50 species of animals, including red pandas and orangutans, and over 300 species of plants.

**Gyotoku Birding Observatory (Ainesuto: I-Nest)**

In addition to birding, the facility has a café where anyone can come and relax and enjoy the nature of the Gyotoku Suburban Greenbelt.



Visit



**Road Station Ichikawa**

Local specialties are sold. Local produce is used in the restaurant and the café in this facility. Coffee beans are roasted according to your taste before serving.

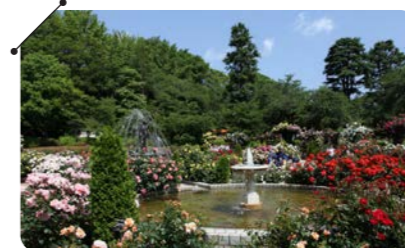


**Higashiyama Kai Memorial Hall**

The Hall was constructed in a Western style which was inspired by Germany where Kai Higashiyama studied, and was influenced both in his persona development and the direction of his art.

**Satomi Park**

It is one of Ichikawa City's most representative parks, best known for cherry blossoms and roses. It is situated on Konodai terrace, overlooking the magnificent Edogawa River.



**Gyotoku Fureai Denshoukan**

The building is the former Asako Mikoshi factory-cum-residence, and it is registered as a tangible cultural property of Japan. There are displays of portable shrines, dioramas, and information about traditional festivals in Gyotoku.



**Hokekyoji Temple**

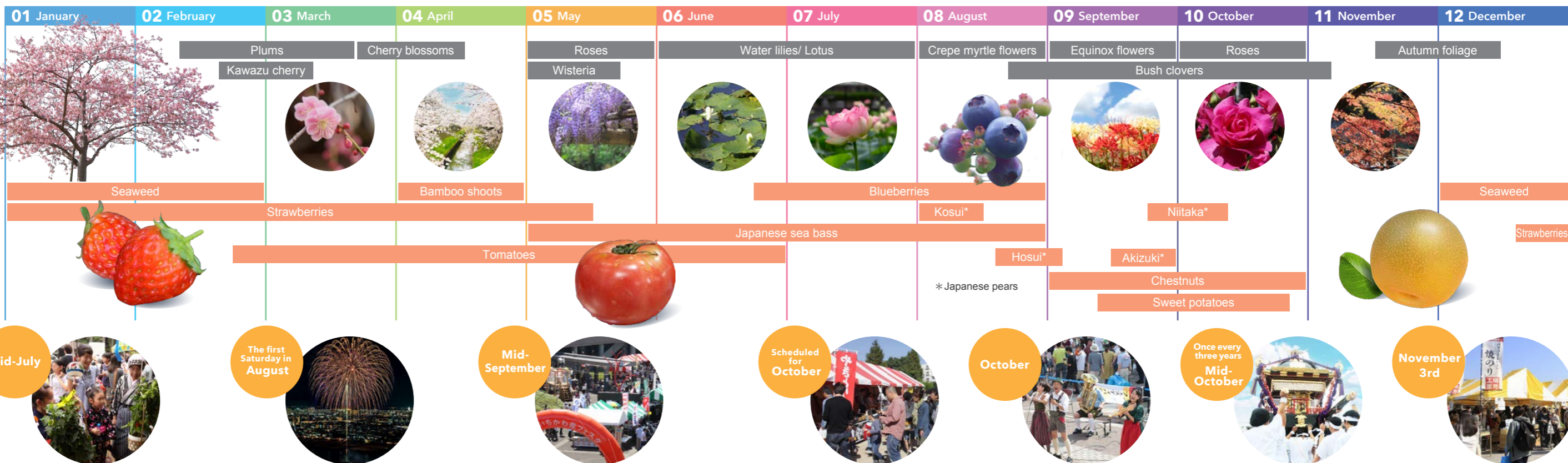
Many national treasures, important cultural properties, and city-designated cultural assets remain including Hokketo, Chiba Prefecture's oldest five-storied pagoda, and Shisokumon Gate. In spring, the magnificent buildings and cherry blossoms in full bloom make you feel as if you have gone back in time to a distant past.

**I-Link Town Observatory facility**

It's an observatory facility on the 45th floor of the "the Towers West" high rise, situated near the south exit of Ichikawa station.



Outing calendar



**Hozuki (ground cherry) Market**

It's a summer event held at Tekona Shrine. On the same day, lanterns are lit up at nearby Mamasan Guhoji Temple, providing pleasant summery ambiance in the evening.

**Ichikawa City fireworks display**

It's one of the biggest fireworks displays in Japan. Many fireworks in various themes are launched to match the background music.

**Ichikawa Industrial Festival**

Featuring a wide range of products produced in Ichikawa, the festival also attracts visitors for stage performances and local companies' wonderful industrial techniques and goods.

**Gyotoku Festival**

It's a popular annual event drawing many visitors for residents' activity presentations, a portable shrine display, parades and more!

**Germany Day - Oktoberfest**

Food and culture of Rosenheim, Germany, a partner city of Ichikawa, are promoted in this event.

**Gyotoku Five Town's Grand Festival**

This is the grand festival that began in 1826, and it is organized by Toyouke Shrine serving as the local Shinto deity of five districts of the Gyotoku area.

**Ichikawa Resident Festival**

This festival offers stage performances by resident groups. Various booths for food and promotion are set up.